

# SAINT LOUIS ART MUSEUM

*The William P. Healey Collection of Native American Art press images*



1. Tonita Peña (Quah Ah), San Ildefonso Pueblo and American, 1893–1949; “Untitled” (Corn Dance), 1930s; tempera on paper; image: 13 1/2 x 21 1/2 inches; (The William P. Healey Collection of Native American Art); © Estate of Tonita Peña



2. Tonita Peña, San Ildefonso Pueblo and American, 1893–1949; “Eagle Dance”, c.1932–33; oil on beaverboard; 49 x 96 inches; (The William P. Healey Collection of Native American Art); © Estate of Tonita Peña



3. Awa Tsireh, San Ildefonso Pueblo and American, 1898–1955; “Untitled”, 1930s; watercolor; image: 17 x 23 1/2 inches; (The William P. Healey Collection of Native American Art); © Estate of Awa Tsireh



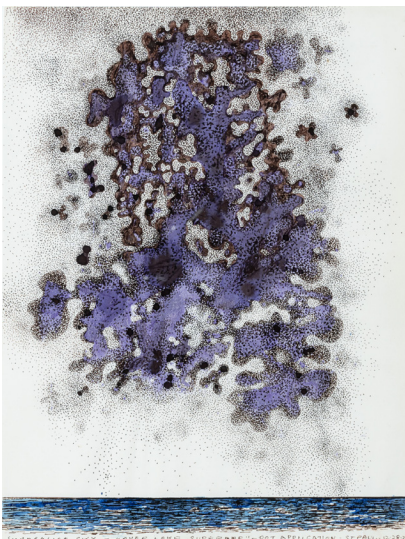
4. Awa Tsireh, San Ildefonso Pueblo and American, 1898–1955; “Untitled”, 1930s; watercolor; image: 10 1/2 x 21 1/2 inches; (The William P. Healey Collection of Native American Art); © Estate of Awa Tsireh



5. Allan Houser, Chiracahua Inde (Apache) and American, 1914–1994; “Buffalo Hunt”, 1970s; acrylic on canvas; image: 42 x 62 inches; (The William P. Healey Collection of Native American Art); © Chiinde LLC ( a Houser/ Haozous Family company)



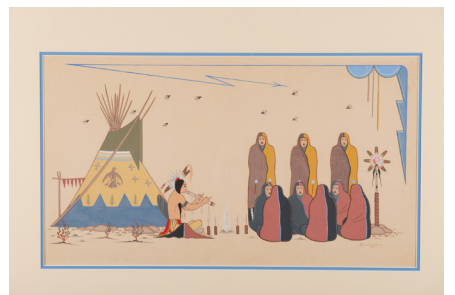
6. Tony Abeyta, Dine (Navajo) and American, born 1965; “Church of this Earth”, 2013; oil on canvas; image: 32 x 38 inches; (The William P. Healey Collection of Native American Art); © Tony Abeyta



7. George Morrison, Anishinaabe (Ojibwe) and American, 1919–2000; “Surrealist Sky Over Lake Superior”, 1979; ink; image: 10 1/2 x 8 inches; (The William P. Healey Collection of Native American Art); © Estate of George Morrison, Courtesy of Briand Morrison



8. George Morrison, Anishinaabe (Ojibwe) and American, 1919–2000; “Ephemeration”, 1962; oil on canvas; 17.5 x 24.5 inches; (The William P. Healey Collection of Native American Art); © Estate of George Morrison, Courtesy of Briand Morrison

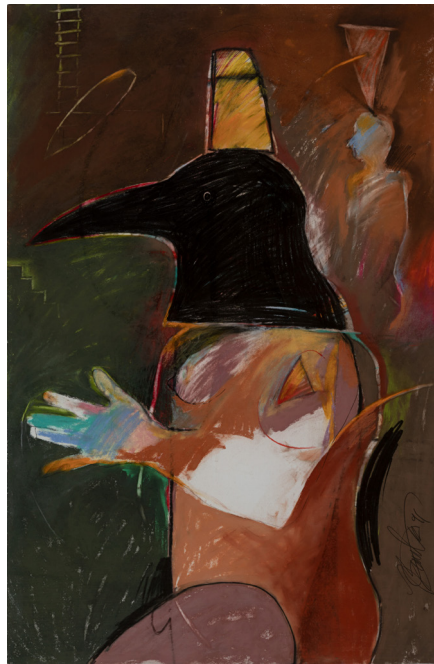


9. Acee Blue Eagle, Muscogee and American, 1907–1959; “Untitled” (Sun Ceremony), mid-20th century; tempera on paper; 14 1/2 x 26 inches; (The William P. Healey Collection of Native American Art); © Estate of Acee Blue Eagle





10. Acee Blue Eagle, Muscogee and American, 1907–1959; “Untitled”, mid-20th century; gouache on paper; image: 12 1/2 x 10 1/2 inches; (The William P. Healey Collection of Native American Art); © Estate of Acee Blue Eagle



11. Rick Bartow, Mad River Band of the Wiyot Tribe and American, 1946–2016; “Crow's Side of the Tale”, 1991; pastel and graphite; image: 40 x 26 inches; (The William P. Healey Collection of Native American Art); © The Richard E. Bartow Trust



12. Linda Lomahaftewa, Hopi/Choctaw, born 1947; “Parrot Dance”, c.1980; acrylic on canvas; 39 1/2 x 45 inches; (The William P. Healey Collection of Native American Art); © Linda Lomahaftewa



13. John Hoover, Unangan (Aleut) and American, 1919–2011; “Volcano Woman #1”, 1990; wood, metal hinges, and pigment; closed: 51 x 12 1/4 inches, open: 51 x 24 1/4 inches; (The William P. Healey Collection of Native American Art); © Estate of John Hoover



14. Allan Houser, Chiracahua Inde (Apache) and American, 1914–1994; “Home from War”, 1938; casein on paper; image: 14 1/2 x 21 1/2 inches; (The William P. Healey Collection of Native American Art); © Chiinde LLC ( a Houser/ Haozous Family company)



15. Allan Houser, Chiracahua Inde (Apache) and American, 1914–1994; “Navajo Sheepherder”, 1978; acrylic on canvas; image: 48 1/3 x 24 1/4 inches; (The William P. Healey Collection of Native American Art); © Chiinde LLC ( a Houser/ Haozous Family company)